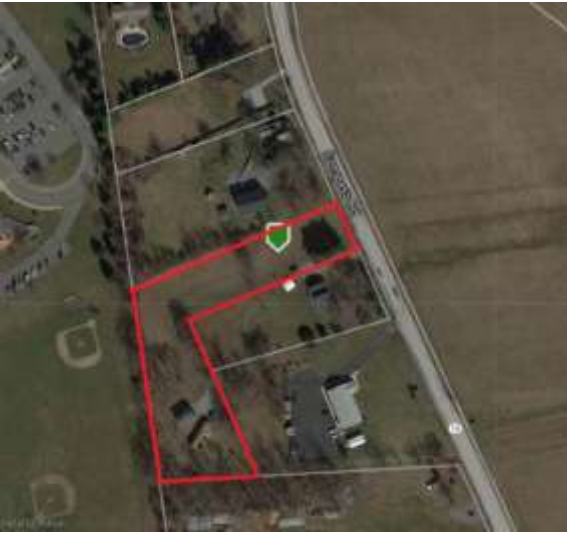


TAX MAP



★PERSONAL PROPERTY★

★Lawn Equipment & Tools★

2011 John Deere X739 165 Hrs, 4x4 Wheel Steer with 60" Edge Deck & 3pt Hitch, John Deere 54" Quick Hitch Snowblower Attachment, John Deere Quick Hitch 54" Snowblade Attachment, John Deere Wheel weights, Cub Cadet 2135 Hydro Lawn Tractor, Craftsman Lawn Utility Vehicle/Riding Mower, 5 HP Push mower, Poulan Pro 42 CC Chainsaw, Electric Log Splitter, 2.5 HP Upright 21 Gal Air Compressor, Portable Air Compressor, Lawn Cart, Wheel Barrel, Lawn Spreader, Folding Car Ramps, Battery Charge, Tool Boxes, Floor Jacks, Jack Stand, Saw Horses, Ladders, Assorted Hand & Yard Tools & More.

★Cycles & Bikes★

Honda Motorcycle in Parts, Fat tire Mini Baja Mini Bike, Cannondale 10 Speed, Trail & Street Bikes

★Furniture, Appliances, & Household Goods★

New 3 PC Cherry Bedroom Suit in Boxes, Double Electric Bed, Small Desk & Chair, Assorted Chairs, Dining Table, Sofa, Sony 60" Flat screen TV with Surround Sound, Refrigerator, Apt Size Refrigerators, Maytag Washer (Like New), Whirlpool Dryer, Microwave Oven & Few Household Goods, & More

PUBLIC AUCTION

VALUABLE CHESTER CO. REAL ESTATE

659 Compass Road

Honeybrook, PA 19344

Mobile Home & Det. 2 Story 24'x35'

Garage/Shop on a Level 2 Acre +/- Lot

John Deere X739 4x4 60" Deck 165 Hrs., John Deere Attachments, Lawn & Snow Equipment, Honda Cycle, Mini Baja Mini Bike, Tools, New Bedroom Suit, Furniture, & HH Goods

Thursday, April 2, 2020 - 4:00 PM

Real Estate to be Sold at 6:00 PM

Honeybrook Twp – Twin Valley School District



**BARR
DAVIS**
AUCTIONEERS, LLC

(717) 442-9221

(610) 384-8433

www.barrdavis.com

AY-002084

STYLE: Single Wide Mobile Home
YEAR BUILT: 1971
LOT DESCR: 2 Acres +/- (Plot Plan on Back)
ZONING: Residential
TAX PARCEL: 22-06-0039.02A0
DEED REF: 8195-1071
LIVING AREA: 672 sf +/-

TAXES: YEAR: 2019

\$1,228

School: Twin Valley

\$178

County: Chester

\$40

Municipal: Honeybrook Twp

\$1,446

TOTAL

1 Bedrooms 1 bath

ROOM	SIZE	LEVEL	COMMENT
LIVING	7'x20'	1 st	Wall to Wall Carpet
DINING	7'x11'	1 st	Vinyl
KITCHEN	7'x11'	1 st	Vinyl
BEDROOM	9'x11'	1 st	Wall to Wall Carpet

BATHS: 1 Full Bath on Main Floor

LAUNDRY: Area in Hall

HEATING: Oil, Forced Air/Central A/C

WATER HEATER: Summer/Winter

BASEMENT: None

GARAGE: 24'x35' 2 Car Detached

WINDOWS/DOORS: Storm Windows

WATER: Well

SEWER: On Site Septic

ROOF: Shingle

*The information contained in this brochure is believed to be accurate,
but is not guaranteed.*