

PUBLIC AUCTION

VALUABLE CHESTER CO. REAL ESTATE

310 Maple Street

Honeybrook, PA 19344

**Level .45 Acre +/- Building Lot Bordering
Farmland on 2 Sides with Public Water &
Sewer Available**

No Known Deed Restrictions

Honeybrook Boro – Twin Valley Schools

Tuesday, April 9, 2019 – 6:00 PM



**BARR
DAVIS**
AUCTIONEERS, LLC

(717) 442-9221
(610) 384-8433
www.barrdavis.com
AY-002084

ADDRESS: 310 Maple Street, Honeybrook, PA 19344

DATE: Tuesday, April 9, 2019 At 6:00PM

OWNER: Jackson P., Jr. & Phyllis J. Diehl

★FEATURES★

.4476 Acres+/- Level Building lot Bordering Farmland on 2 Sides with Public Water & sewer Available. Great Location with Easy Access to PA Turnpike and Major Routes. Don't Miss it.

LOT DESCR: .4476Acres +/- (Plot Plan on Back)

ZONING: Residential

TAX PARCEL: 12-02-0029.0100

DEED REF: 11623170

TAXES: **YEAR: 2019**

\$989

School: Twin Valley

\$147

County: Chester

\$67

Municipal: Honeybrook Borough

\$1,203

TOTAL

★REAL ESTATE AUCTION TERMS★

10% Down payment day of Auction.

Balance by May 31, 2019.

Buyer pays all Realty Transfer Taxes.

Buyers have the opportunity to make an offer to purchase this property prior to the auction under the auction terms.

Call Auctioneers for complete brochure or private showing.

Lot is Partially in Honeybrook Township but is taxed and regulated by Honeybrook Borough.

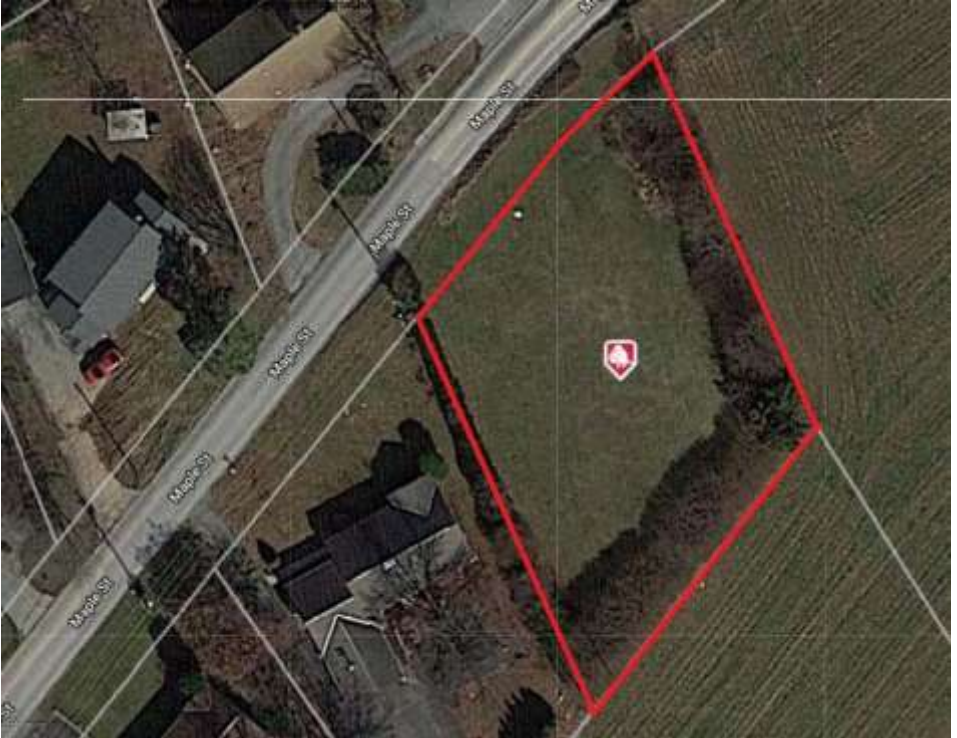
★DIRECTIONS★

From Route 322 Just East of Route 10 Intersection in Honeybrook,
Take Maple Street North to Lot on Right

*The information contained in this brochure is believed to be accurate,
but is not guaranteed.*

★PLOT PLAN★

.4476 Acres+/- Level Building lot Bordering Farmland on 2 Sides with Public Water & sewer Available. Great Location with Easy Access to PA Turnpike and Major Routes. Don't Miss it.



**Great Farmland Views No Known Deed Restrictions
Buy Now – Build Later
Seriously for Sale!**

*The information contained in this brochure is believed to be accurate,
but is not guaranteed.*